

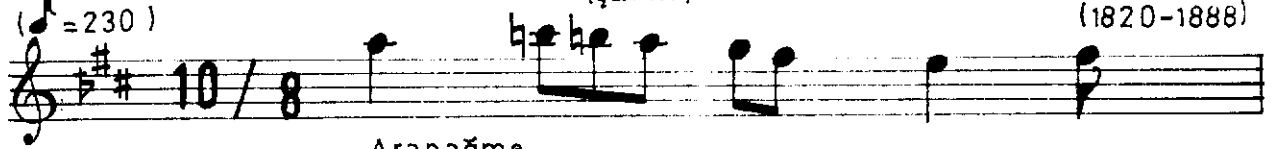
CURCUNA

(♩ = 230)

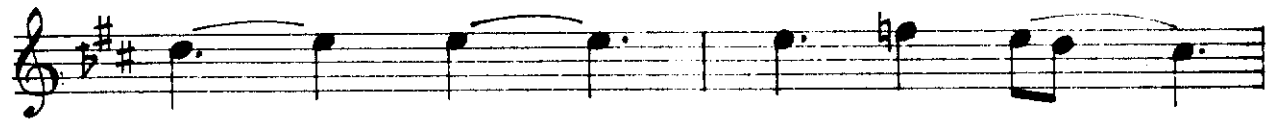
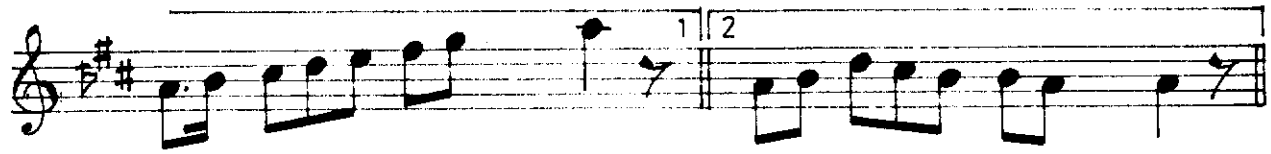
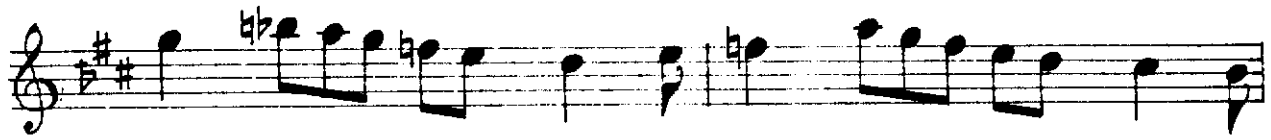
HİC ÂZ
(şarkı)

RİFAT BEY

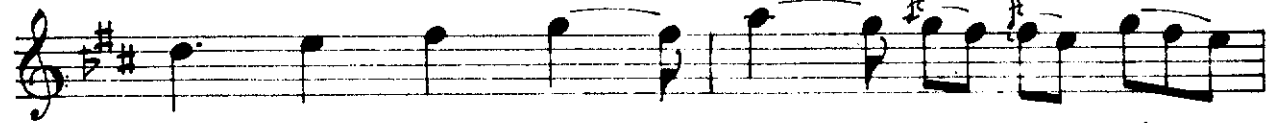
(1820-1888)



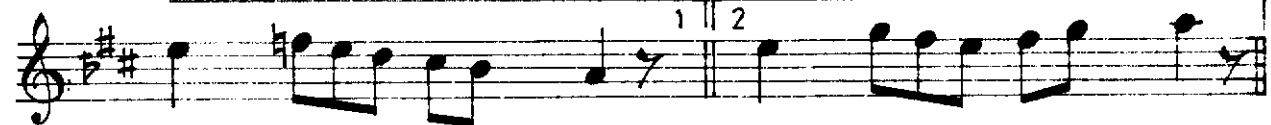
Aranağme



Sis . . . len . . . di ha va . . .



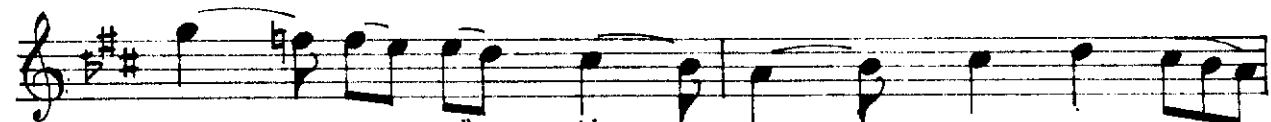
tar fı çe men . . . za . . . rı . nem al . . .



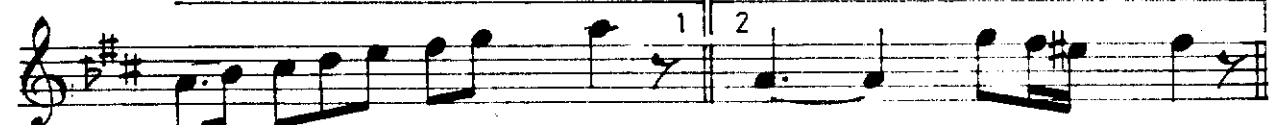
dı -s a z - . . . di -s a z - . . .



Bül . . . bül . . . yu va . dan . . .



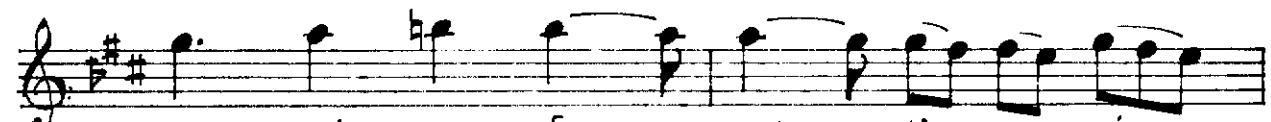
uç . . . du . gü . lis . . . ta . . . nı gam al . . .



dı -s a z - . . . di -s a z - . . .



Bağ . . . lar . . . bo zu lup . . .



bez mi ve fa şek li . ne . gir . . .

ga

di -s a z - di -s a z -

Gül . . . za . . . ri mu hab . . .

bet . . . de . . . yi . . . ne . . . şen . . . lik a zal . . .

di -s a z - di -s a z -

Y.Öm.

SİSLENDİ HAVÂ TARF-I ÇEMENZÂRI NEMALDI
 BÜLBÜL YUVADAN UÇDU GÜLISTÂNI GAMALDI
 BAĞLAR BOZULUP BEZM-İ VEFÂ ŞEKLİNE GİRDİ
 GÜLZAR-I MUHABBETDE YİNE ŞENLİK AZALDI

BİR GÜN SENİ ELBET DE EDER VÂSİL-I CÂNÂN
 HER ÂH-I SEHER-GÂH İLE BÜ HAL-İ PERİŞAN
 BAK BÜLBÜLE SABR EYLE GÖNÜL EYLEME EFGAAN
 HENGÂM-I GÜLE NÜŞ-İ MÜLE ŞUNDA NE KALDI

Vezni: MEFÛLÜ MEFÂÎLÜ MEFÂÎLÜ FEÛLÜN

Tarf-ı çemenzâr	: ÇİMENLİĞİN TARAFI, ÇAYIRLIK
Gülistan	: GÜLLÜK YER, GÜL BAHÇESİ
Bezm-i vefâ	: DOSTLUK MECLİSİ
Gülzar-ı muhabbet	: SEVGİNİN GÜL BAHÇESİ
Vâsîl	: ERİŞEN, KAVUŞAN
Sehergâh	: SEHER VAKTI
Hengâm	: ZAMAN, MEYSİM
Nûş	: İÇME
Mül	: ŞARAB

İsmail Kocaeli